

E-Plug Enhances Motor Analysis Safety

Acquire motor electrical signature analysis data at a motor control center (MCC) — without opening the MCC door.

Challenge

Ensuring safety during operations is paramount at nuclear power plants. During motor analysis, opening a 460 or 480-volt motor control center cabinet door while equipment is energized has inherent dangers requiring protective clothing and qualified personnel.

Solution

Convenient and Practical

Framatome's E-Plug hardware permits the acquisition of motor electrical signature analysis data at a motor control center (MCC) — without opening the MCC door. The user simply attaches a connector to the door, while cable from the innovative E-Plug module passes voltage and current data from probes inside the MCC to the connector. The connector then mates with a cable that permits direct feed into EMPATH 2000, expediting electrical signature analysis.

The E-Plug's efficient design comprises an enclosure with external attachment leads. Both current and voltage signals pass through these leads. Inside the enclosure, electronic circuitry processes the signals to prepare them for output to the through-door connector. In short, E-Plug contains everything you need to ensure a safe and efficient signal transmission.



Customer benefits

- Enhances safety by avoiding exposure to potential dangers associated with opening a 460 or 480-volt cabinet door while equipment is energized
- Precludes both the need for protective clothing and the attachment/removal of probes inside the MCC
- Simplifies connections, requiring only one cable to perform testing
- Reduces overall testing time
- Convenient to use. Eliminates probe handling when performing tests
- One person can perform online motor testing with EMPATH 2000
- Fully compatible with Framatome's new generation Continuous Motor Monitoring System (CMMS) platform

Inputs to the E-Plug Module

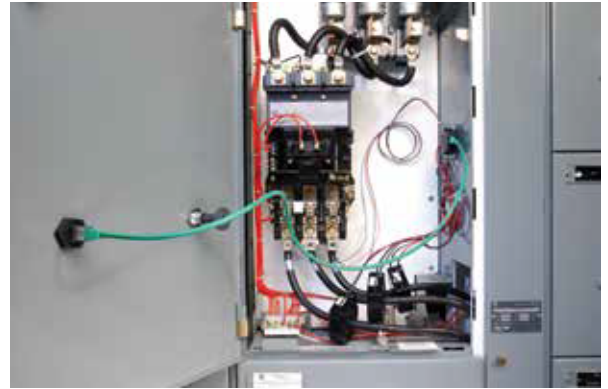
Power cables to the motor pass through current transducers (CTs) that measure the current flowing through the cable and produce a voltage output proportional to the current flowing to the motor. The voltage output from the current transducers is typically tens of milli-volts per amp, yielding an upper limit of 10 Vac for the current transducer output.

Fused wires attached to the power cables provide a voltage signal to the E-Plug module. For supplied power up to 1,000 Vrms, the E-Plug module will be directly connected to the voltage signal. For supplied power above 1,000 Vrms, output from existing potential transformers (PTs) will step the voltage down to 120 Vrms prior to feeding to the E-Plug Module.

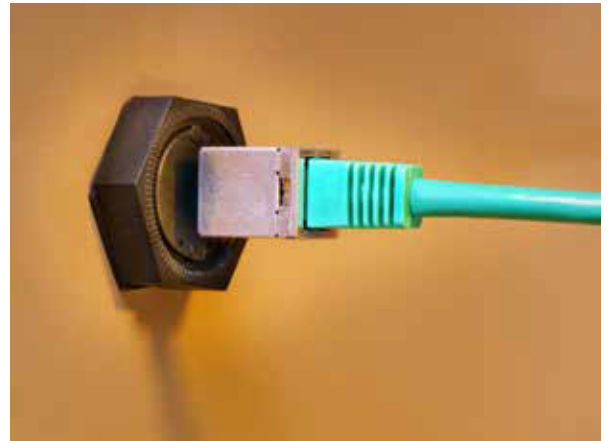
For both voltage and current measurements, the frequency response is DC to 5000 Hz, minimum.

Outputs From the E-Plug Module

The outputs from the E-Plug Module to the MCC through-door connector are 5 Vac peak for both current and voltage, limiting external voltages at the MCC door to 5 Vac peak. All outputs from the E-Plug Module provide a frequency response from DC to 5 kHz. The accuracy of all outputs is +/- 3%.



E-Plug's design contains everything you need for efficient signal transmission.



E-Plug simplifies motor analysis and enhances safety.